

MagIQtouch Switch Plate Controller Installation and Operation

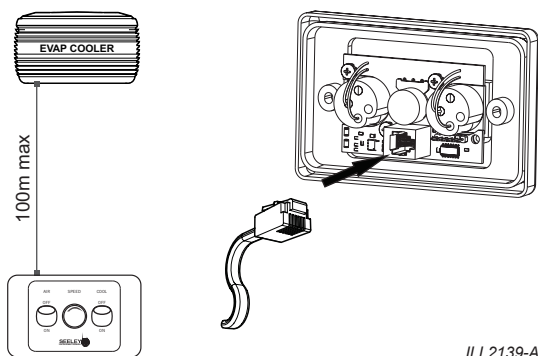
Thank you for purchasing a Genuine component from Seeley International.

INSTALLATION

The Electrical Installation must be carried out by a licensed and qualified electrician in accordance with local and international regulations.

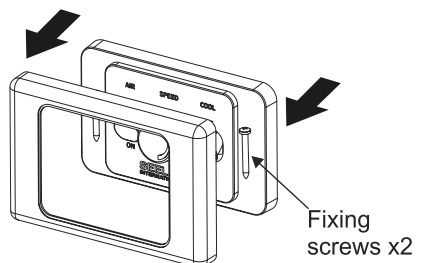
Note: MagIQtouch switch controller can only be used for Evaporative Cooler control. It can NOT operate a heater or combination of both.

A 1x MagIQtouch Switch Controller can be fitted to any 1x Seeley International MagIQtouch Evaporative cooler via the 6-way port on the cooler electronics. The following diagram shows the most basic wiring connection. Always refer to each MagIQtouch installation manual supplied with components for full system details.

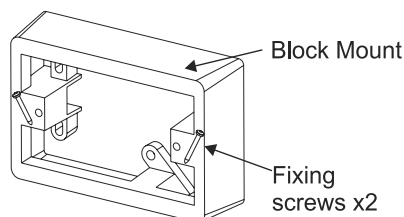


ILL2139-A

The MagIQtouch Switch Plate Controller can be mounted to Gyprock or solid walls such as bricks. It is recommended that the controller is mounted at least 1.5m from the floor and can be recessed or surface mounted with the supplied optional surface mounting bracket. Fixing screws are located in the MagIQtouch switch plate controller as shown or wall surface mounting bracket as shown.



Fixing screws x2

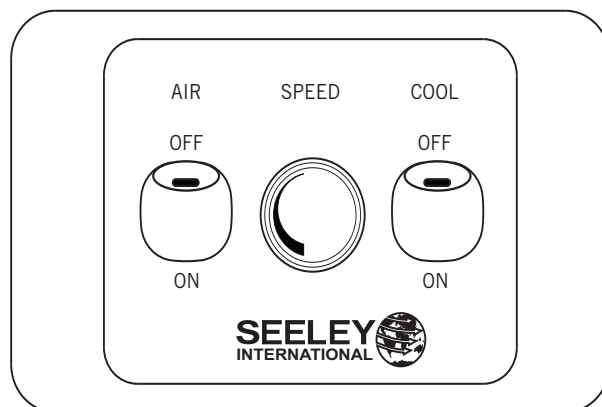


Block Mount

Fixing screws x2

ILL2140-A

OPERATION



ILL2141-A

The MagIQtouch switch plate offers independent control for the fan and cooling functions.

To Start Cooler

1. Switch the COOL control on.
2. Turn on the AIR (fan) control
3. Using the SPEED knob, select the fan speed you desire. Rotate the knob "CLOCKWISE" to increase Fan Speed. Rotate the knob "ANTI- CLOCKWISE" to decrease Fan Speed

Stop Cooler

1. Switch the COOL control off.
2. Switch the AIR control off.

Vent only

1. Switch the AIR control on.
2. Switch the COOL control off.
3. Turn the SPEED control knob to your desired fan speed.

PLEASE NOTE

All service and maintenance work should be carried out by suitably trained and licensed personnel. For your local service agent visit seeleyinternational.com and click on the 'get support' tab.

Warranty Service

Australia 1-300-650-644

Technical Support

Australia 1-300-650-399

seeleyinternational.com

It is the policy of Seeley International to introduce continual product improvement. Accordingly, specifications are subject to change without notice. Please consult with your dealer to confirm the specifications of the model selected.